



ALWAYS MOVING FORWARD

2023-2024

www.vsaonline.org

Decorative wavy lines in red and blue colors sweep across the bottom of the page, starting from the left and right edges and curving upwards towards the center.

Introductions



Welcome

Topics for Tonight

High School Game - Current VSA/VDA or former VSA players

Battlefield: Sarah Bain, Angela Kim, Lily Wright, Autumn Hottle, Cammi Beckmeyer, Noelle Kang, Zoey Kerns, Olivia Mormann, Sara Schmall, Kate Wild, Ella VanRoe, Emory Davis, Kyndal Shuler, Rylie Swenson, Isabella Trainer, McKenna Kolasch, Kylie Terhaar

Patriot: Elena Scianna, Sophia Adame, Carly Brock, Hailey Martinez, Camille Daniel, Sophia Nicewonger, Braelyn Medina, Emma Capuano, Maya Bravo, Ava Waibel, Gaby Shaw, Alex Laguna, Cam Holley, Grace Honkus, Reagan Jones

Club DNA



Out **Work** - Out **Compete** - Out **Play**

Player DNA



Passionate - Hardworking - Committed - Dedicated

Playing DNA



Pressing - Transition - Possession

Training DNA



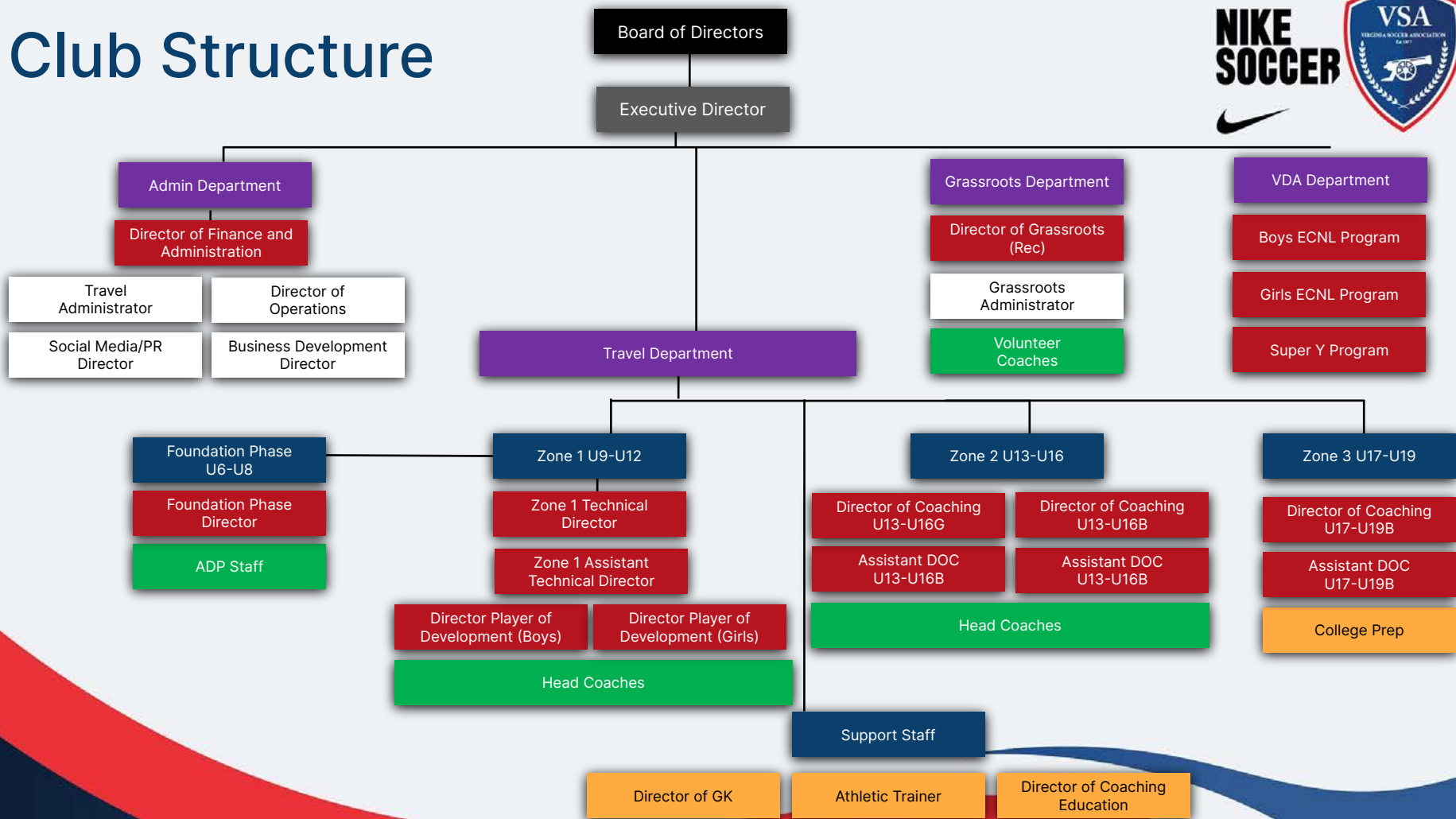
Competitive - Intensity - Repetition

Activity DNA



Dominate 1v1 - Possession/Pressing - Transition to Attack

Club Structure



Club Foundations



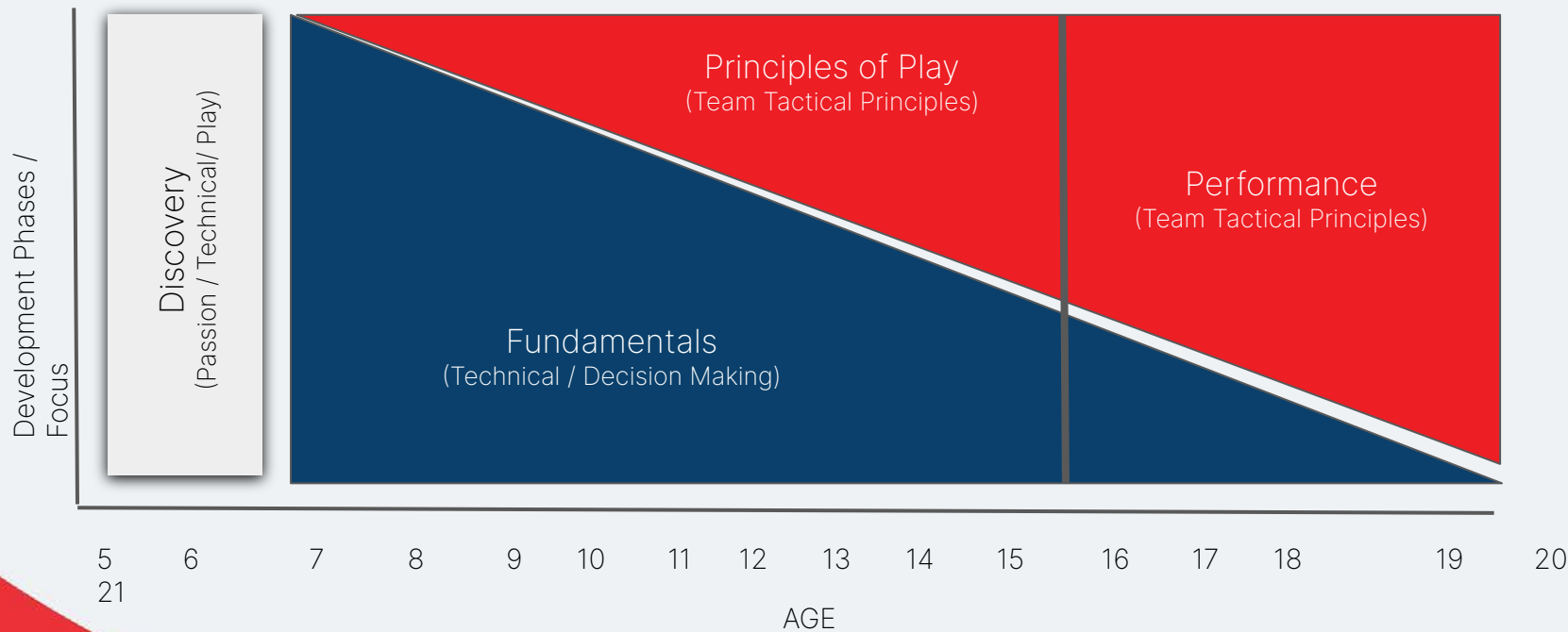
COACHING	PLAYER DEVELOPMENT	PARENT EDUCATION	ADMINISTRATION
CLUB COACHING EDUCATION	AGE SPECIFIC CURRICULUMS	ESTABLISH EXPECTATIONS AND STANDARDS	COMMUNICATION
LICENSES / QUALIFICATIONS	PLAYER DEVELOPMENT PATHWAY / PROGRESSION	UNDERSTANDING AND KNOWLEDGE OF THE PROCESS	ORGANIZATION
MENTORING / DIRECTOR SUPPORT	CLUB PHILOSOPHY / STYLE OF PLAY / SYSTEMS OF PLAY	RESULTS VS DEVELOPMENT	SUPPORT SYSTEM
ORGANIZATION / PLANNING / PREPARATION / PERFORMANCE	PLAYER STANDARDS AND EXPECTATIONS	SUPPORT AND ENCOURAGEMENT	TRUST

Phases of Development



Phase	Age	Focus	
Introduction Phase	4-6 years of age	PLAY	
Discovery Phase	6-8 years of age	INDIVIDUAL DEVELOPMENT / PASSION / BALL MASTERY / PLAY	
Foundation Phase	8-12 years of age	INDIVIDUAL DEVELOPMENT / DECISION MAKING / TECHNICAL / PLAY	
Development Phase	13-16 years of age	INDIVIDUAL DEVELOPMENT SUPPORTED BY TEAM / DECISION MAKING / TECHNICAL	
Performance Phase	17-19 years of age	INDIVIDUAL DEVELOPMENT ALIGNED WITH TEAM PERFORMANCE	

Developmental Focus



Player Pathway



Out Work - Out Compete - Out Play

2023–24



Transferring lessons from England



What we do the same - Work Ethic - Intensity - Accountability

Can you teach Hard Work?

Attitude - Habits - Passion - YOU Control



Alyssa Tallent's Journey



If you LOVE IT - You WILL do more



Passion

Immerse into lifestyle

Driven to excel

Culture



It starts with US!

Staff Development - Guest Speakers - Technical Clinics - England



What is VSA doing to support you doing more? Season 2023-24



Zone 1 - U9 and U10 Pods

Friday Night Lights

Pre-Season open nights

GK Academy

Town Hall Meetings for mental component of game

Increased number of tournaments

Life Skills Meetings

Veo

Journals / Podcast

Individual Development Plans



The Journey

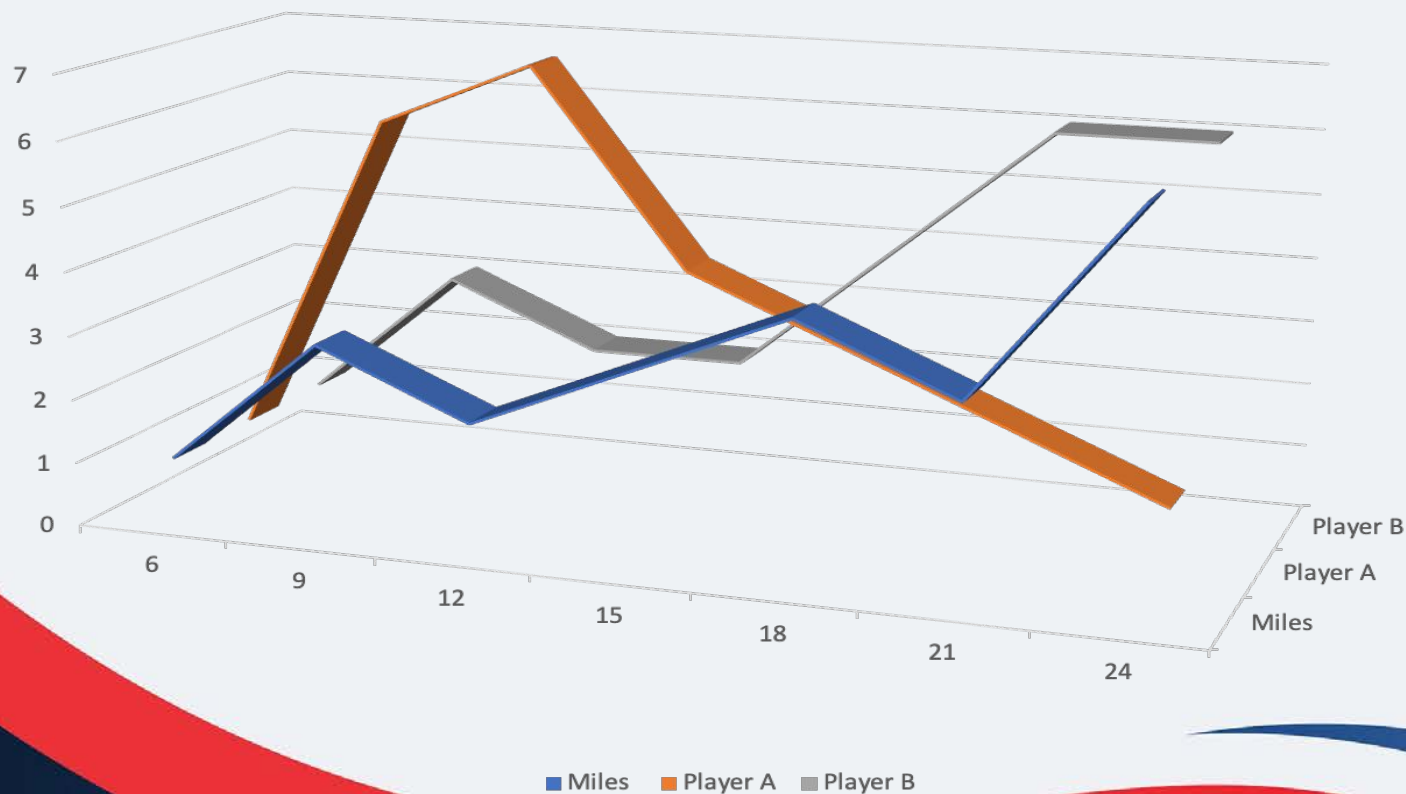
2023–24



What do you see?



Development is not linear



Deliberate Practice



INTENT	Intentional, purposeful, and systematic
FOCUS	Requires 100% focus
GOAL-ORIENTED	Have a specific goal in mind to improve performance
PROCESS	Always exploring, experimenting, and refining
EFFORT	Requires sustained effort and concentration



Burnley FC - Club Culture



Working Class

Winning Culture

Players

Coaches

Supporters





Long Park- Club Culture



Tech-ball table

Rebounders

Extra Training

Supporters

Changing Rooms

Club House

Future Plans



Club Programming

2023–24



Levels of Play - U9/U10



Program	Team/League	Events	Training	Third Session	Months	Coaches	Futsal
U9/ U10 Pod 1 (2015-2014)	A and B Teams Competes in NCSL	Attend 5 events (Plus 1 potential additional event)	Train 2 Times a week at 1.5 hours per session	Third session included in fee	Fall, Winter, Spring	Lead Coach and Support Coach	Futsal Included
U9/U10 Pod 2 (2015-2014)	C and D Teams Competes in NCSL	Attend 4 local events	Train 2 Times a week at 1.5 hours per session	Third session is optional and additional fee (\$75 Fall/Spring))	Fall, Winter, Spring	Lead Coach and Support Coach	Futsal Additional Fee (\$75)

Additional Programming		
GK Academy	Townhall - Guests	Online Lifeskills
Friday Night Lights	IDP	Pre-Season Open Nights
Veo	Clinics	Camps

Levels of Play - U11/U12



Program	League	Events	Training	Third Session	Time Frame	Coaching	Additional
U11-U12 Pre-ECNL RL 1 VDA West	Teams Competes ECNL RL	Attend 6 events (Plus 1 potential additional event)	Train 3 Times a week	Third session VDA East and West	Fall, Winter, Spring	Head Coach	Futsal Additional Fee
U11-U12 Pre-ECNL RL 2	B Team compete in NCSL (Potential ECNL RL)	Attend 6 local events	Train 3 Times a week	Third session club concept	Fall, Winter, Spring	Head Coach	Futsal Additional Fee
U11-U12 Premier Red and Royal	C and D Team Competes in NCSL	Attend 4-5 local events	Train 3 Times a week	Third Session Club Concept	Fall, Winter, Spring	Head Coach	Futsal Additional Fee

Additional Programming		
GK Academy	Townhall - Guests	Online Lifeskills
Friday Night Lights	IDP	Pre-Season Open Nights
Veo	Clinics	Journals

Levels of Play - U13-U19



Program	League	Events	Training	Third Session	Time Frame	Coaching	Additional
U13-U19 ECNL RL	Teams Competes ECNL RL	Attend 6 events (Plus 1 potential additional event)	Train 3 Times a week	Third session Club Concept	Fall, Winter, Spring	Head Coach	Futsal Additional Fee
U13-U19 Premier Red and Royal	B and C Team compete in NCSL (Potential ECNL RL)	Attend 4-5 events	Train 3 Times a week	Third session club concept	Fall, Winter, Spring	Head Coach	Futsal Additional Fee

Additional Programming		
GK Academy	Townhall - Guests	Online Lifeskills
College ID Program	IDP	Pre-Season Open Nights
Veo	Clinics	Journals

Upcoming Events



Program Brochure releases - Zone 1, Zone 2, Zone 3

Zone 1 / Zone 2 / Zone 3 Meetings - Specific Programs

Uniform Release

Coaching Slate Release

Register for tryouts



ALWAYS MOVING FORWARD

2023-2024

www.vsaonline.org

Decorative wavy lines in red and blue colors sweep across the bottom of the page, starting from the left and right edges and curving upwards towards the center.